

# Secure Mobility® Solutions Family



Delivering trust and simplicity  
in a complex wireless world.

## WHAT'S INSIDE

- BlueSecure Controller Family
- BlueSecure Intrusion Protection System
- BlueSecure Access Points
- BlueView Management System



## Overcome Today's Wireless LAN Challenges

Even with the obvious cost savings and productivity gains, wireless LAN technology presents significant challenges for IT professionals. How do you support a growing number of wireless devices and competing standards, protect valuable computer resources from the growing threat of Internet viruses and worms, overcome bandwidth limitations, protect the network from unauthorized users, and integrate your WLAN into an existing wired infrastructure? The answer—Bluesocket's family of Secure Mobility® Solutions.

### BlueSecure™ Controller Family

Bluesocket offers a wide range of scalable Controllers to support your enterprise WLAN deployments from the network edge to the core. The **BlueSecure 400** supports branch and regional offices, and workgroups of up to 50 concurrent users; while the **BlueSecure 1100** can support entire office floors of up to 100 users; for medium to large enterprises, the **BlueSecure 2100** supports up to 400 users while providing hardware-based encryption acceleration. For larger enterprises requiring higher throughput and centralized WLAN management and control, the **BlueSecure 5000** provides a core infrastructure platform supporting up to 1000 users.

Bluesocket's patent-pending Secure Mobility® technology gives users of laptops, PDAs and other mobile devices wireless access to corporate networks and the Internet while moving across subnets. Secure Mobility gives users freedom to work where they choose—letting them roam seamlessly across networks, even while using IPSec tunneling, without the need to re-authenticate. Secure Mobility technology is compatible with, and enhances current WLAN security standards such as 802.1x, WPA and 802.11i without requiring additional or proprietary client software.

Unlike traditional firewalls and VPNs, Bluesocket's approach goes beyond merely preventing intruders from breaking into your corporate network. BlueSecure Controllers use role-based access control to provide the correct level of access for every user of the WLAN. Access to corporate resources can be based on each user's role within the organization. Thus, an employee within the IT department may see all network assets, while a visiting guest can only connect to the Internet to check email and browse the Web, and will be denied access to the corporate network. This controlled access translates into the right level of security—regardless of the mobile device, security protocol or client-side security software.

The BlueSecure Controller fully integrates Check Point's Integrity™ Clientless Security to provide a clientless, maintenance-free way to clean wireless devices of viruses, worms, Trojan Horses, spyware/malware and other threats and anomalies before they are allowed to log-on and gain access to the WLAN. Taking advantage of automated Web-based scanning, Bluesocket is unique in providing trusted endpoint security, ensuring the user's device is free from viruses and worms, and has the required security and OS patches.



BlueSecure 400 Controller



BlueSecure 1100 Controller



BlueSecure 2100 Controller

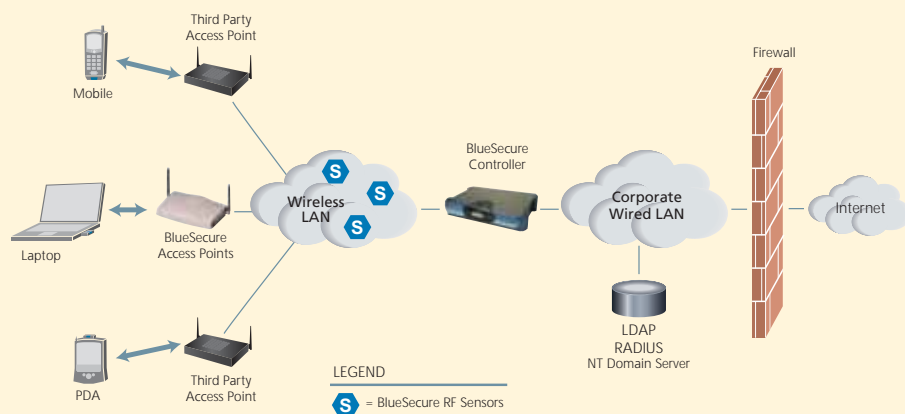


BlueSecure 5000 Controller

#### FEATURES & BENEFITS

- **Simple, Centralized** WLAN deployments from the network edge to the core.
- **Open**, multi-vendor end-to-end WLAN solution that integrates easily into existing infrastructure.
- **Seamless** Layer 3 roaming with Secure Mobility and without the need for additional or proprietary client software.
- **Flexible** policy enforcement: Role, Time, VLAN, Services, Bandwidth/QoS.
- **Universal** WLAN authentication for diverse users/devices.
- **Protects** networks from unauthorized users with strong data encryption.
- **Intrusion detection** and worm protection, with **integrated client scanning for endpoint security**.
- **VoIP Support** via advanced **QoS** and **Bandwidth Management** features.

#### HOW IT WORKS



*The BlueSecure Controller acts as a firewall between the wireless LAN access points and the wired LAN, and requires no changes to existing wired LAN hardware or user client software. Additional BlueSecure Controllers can be connected to provide hot failover capability, as well as scalability and subnet mobility across the enterprise.*



Distributed RF IPS



Centralized RF IPS

## BlueSecure Intrusion Protection Systems

### FEATURES & BENEFITS

- Detect and Protect**  
 Detect and protect against external wireless attacks and internal policy violations automatically on your enterprise WLANs to protect your valuable information assets.
- Identify Hackers**  
 Monitor RF activity 24x7 in and around your WLAN to identify hackers before they attack.
- Enforce WLAN Security Policies**  
 Define and enforce security policies customized for your WLAN environment.
- Diagnose Network Health**  
 Drill down on any access point or client, and launch advanced diagnostics for remote troubleshooting.
- Ensure Compliance**  
 Ensure compliance with NIST recommendations, HIPAA regulations and DoD Wireless Directive Number 8100.2 for government institutions deploying wireless.



## BlueSecure Access Points

### FEATURES & BENEFITS

- Wi-Fi Certified, Centrally Managed**  
 Wi-Fi certified AP interoperates with all client devices and the BlueSecure Controller to provide a high performance, centrally managed wireless LAN solution for enterprises.
- Thin AP Providing 802.11 a/b/g User Access**  
 Works with BlueSecure Controllers in a centralized WLAN architecture for greater administrator control, and improved system scalability and performance.
- Simplified Deployments**  
 Simple "Zero-Config" deployment with configuration provided by BlueSecure Controller.
- Unmatched Security**  
 Standards-based solution ensures ease-of-use and transparency, without compromising security.
- DynamicRF™**  
 Automatic channel and power adjustment to avoid noise, interference, coverage holes and AP failures while providing load balancing and fast roaming.

## BlueSecure Intrusion Protection Systems

Enterprise wireless LANs are rapidly finding their way from pilot projects to mainstream network deployments—from universities to hospitals, from manufacturing and government to corporate networks. Yet WLANs are inherently more vulnerable to external hacker attacks and malicious users. That's why the BlueSecure™ Intrusion Protection System (IPS) is indispensable as an RF intrusion detection and protection system. Bluesocket offers three versions of its RF IPS systems; a stand-alone configuration comprised of a Windows-based server with Distributed RF Sensors, a Centralized RF Sensor that ties directly into the BlueView Management System, and RF IDS provided at the network edge by BlueSecure Access Points. All three architectures provide a complete security monitoring solution that protects your information assets from current and emerging wireless threats.

BlueSecure IPS protects the enterprise from all types of rogue devices including Access Points, rogue clients, neighboring WLANs, peer-to-peer (ad hoc) networks, and software APs as they appear. Not only can BlueSecure IPS alert you to potential WLAN threats, it can also actively contain or block threatening rogue devices. By enabling BlueSecure IPS's powerful blocking capability, you can disable offending devices immediately from a remote location. This minimizes the window of time from alert to resolution, which is critical to ensuring the security of your network.



View real-time updates of security and operational status, and performance exceptions. Determine how your WLAN (spectrum, channels) is being used, where security holes are, and when intruders are trying to access your WLAN.

## BlueSecure Access Points

BlueSecure Access Points are the next-generation, "thin" access point (AP) that work in conjunction with BlueSecure Controllers for enterprise wireless LAN (WLAN) deployments. BlueSecure Access Points feature dual radios supporting 802.11 a/b/g in a plenum-rated housing with fixed omni-directional antennas. (Model AP-1500) and external antennas (Model AP-1540).

BlueSecure Access Points extend and complement the industry-leading, enterprise-class wireless LAN security and management capabilities provided by BlueSecure Controllers. Providing industry-standard radio and security functions, BlueSecure APs are cost-effective, simple to deploy and manage, and ensure reliable and seamless connections for users wherever they roam. Bluesocket's DynamicRF™ technology automatically adjusts AP power and channel settings, and provides coverage hole detection and self-healing coverage for AP failures, thereby ensuring interference-free communication. Client load balancing and fast roaming (802.11i key caching) keeps users connected through a wide variety of conditions by automatically changing to the optimum connection speed as users move through the network.

BlueSecure Access Points are completely plug-and-play, requiring no manual configuration. The Access Points can be directly attached to any existing Ethernet switch or IP router and across any subnet boundary. Once connected, BlueSecure Access Points "auto-configure" themselves by associating with a BlueSecure Controller.



### BlueSecure Access Points (cont'd.)

The BlueSecure Controller automatically configures each BlueSecure Access Point based on the policies and configuration set by the administrator. All Secure Mobility roaming features are handled centrally within the BlueSecure Controller. Network administrators can also configure and manage multiple WLAN Access Point deployments from a central location using Bluesocket's BlueView Management System.

### BlueView™ Management System

Configuring, monitoring, and managing multiple WLANs has often required the time-consuming laborious task of touching multiple devices deployed in multiple locations. Bluesocket's BlueView™ Management System simplifies WLAN management by providing true centralized configuration and maintenance, policy-management, and monitoring capabilities for your WLAN Infrastructure.

BlueView automatically discovers BlueSecure Controllers across a configurable range of IP addresses or networks. Once discovered, BlueView places BlueSecure Controllers and the Access Points associated with those Controllers into groups which can be based on organizational structure, location, or department.

BlueView's powerful scheduling tool enables you to automate BlueSecure Controller and Access Point maintenance and provisioning tasks such as backing up and restoring configurations, pushing out policy or configuration changes, upgrading system software, and installing software patches or new WLAN deployments. Dashboard views give administrators complete system status of BlueSecure Controllers and Access Points enabling a quick response to any issue that may arise.



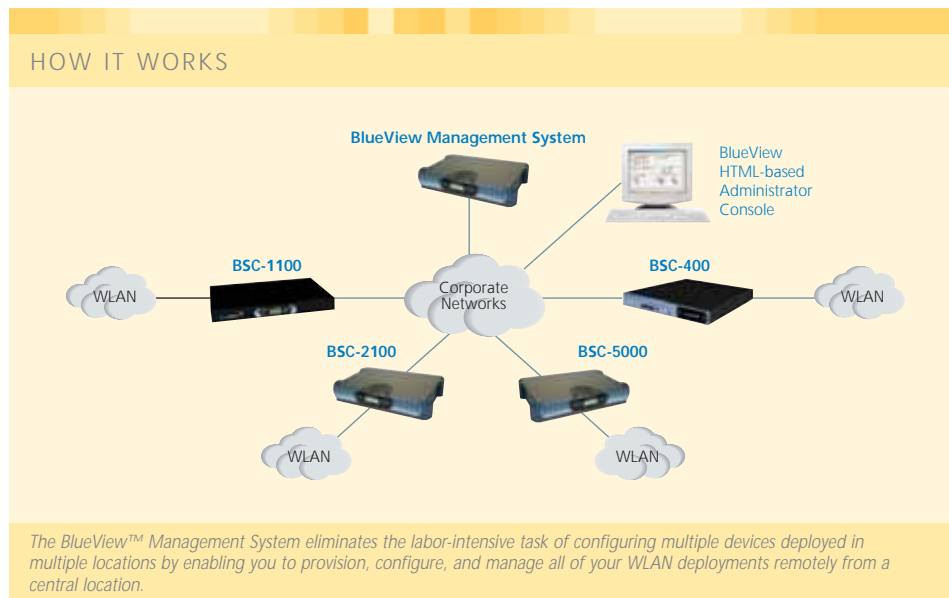
### BlueView Management System

#### FEATURES & BENEFITS

- **Auto-discovery**  
 Automatically discover BlueSecure Controllers and APs across a configurable range of IP addresses or networks.
- **Real-time Monitoring**  
 Display up-to-date information about your WLAN deployments in easily interpreted dashboard views.
- **Automated Provisioning and Management Tasks**  
 Schedule and automate WLAN provisioning and maintenance tasks, allowing consistent rollouts across the enterprise, while lowering cost of operations.
- **Location and Coverage Maps**  
 See users, Rogue APs, WLAN attackers and real-time RF coverage on your actual floorplan to quickly find and resolve security and operational issues.
- **Centralized Alarm and Log Management**  
 BlueView serves as the central repository for WLAN event information.

### Location and Coverage Maps

BlueView allows administrators to create location and coverage maps by importing floor plans and locating Access Points and Sensors on the map. Via BlueView's secure web interface, administrators can graphically visualize WLAN coverage on the actual floor plan and see power, channel, RSSI and AP user loads in real-time. When coupled with BlueSecure APs or Centralized Sensors, BlueView's patent-pending location technology provides complete location information to indicate where users, rogue APs or WLAN attackers are, thereby enabling you to quickly find and resolve security issues.



*"The Bluesocket system was just more polished, and the company was the first to market with a solution that worked."*

— Ken LeCompte  
Programmer/Administrator  
Manager of Wireless at Rutgers University  
Rutgers University



*"Bluesocket integrates well with our Cisco access points and assures our caregivers will run mobile applications with complete security and privacy. This gives us the confidence to roll out more and more wireless applications."*

— Terry Sutter  
Director of Infrastructure and Operations  
Mount Carmel Healthcare Systems

*"Once we evaluated Bluesocket, it became an obvious choice. No other product had the flexibility, the support, and the security that we demanded for this project."*

— Dan Brewer  
Products and Services Manager  
SpringNet, City Utilities of Springfield, MO



## Secure Mobility<sup>®</sup> Solutions

Bluesocket is the leader in open wireless  
security and management solutions that simplify  
the complexities of mobile enterprises.





For more information, visit our Website  
at [www.bluesocket.com](http://www.bluesocket.com)

Or call:

**United States**

+1.866.633.3358 (toll free)

+1.781.328.0888 (Massachusetts)

**Europe**

+44 (0)870 8508736 (UK)

+33 (0)1 49 19 49 00 (France)

+49 (0) 9943 902842 (Germany)

**Asia/Australia**

+64 9 489.9000 (Australia/New Zealand)

