



eTrust® SiteMinder® XauthRADIUS

eTrust® SiteMinder® XauthRADIUS gives an enterprise the ability to integrate multiple third-party authentication servers that support the RADIUS protocol. This integration enables a RADIUS server to challenge a user for more information, thereby increasing security.

Solution Benefits

- Increases security
- Improves operational efficiency
- Enhances return on eTrust SiteMinder investment

Background

Some companies that depend on eTrust® SiteMinder® to protect corporate resources require enhancements to the out-of-the-box eTrust SiteMinder RADIUS Server authentication scheme. eTrust SiteMinder XauthRADIUS enhancements include basic and HTML forms authentication, challenge/response support and multiple server support, including failover and intelligent routing.

Challenge/Response Support. Currently, the eTrust SiteMinder Policy Server can only present credentials and request authentication from a RADIUS Server, which is sufficient for most. However, some organizations require the ability to allow the RADIUS Server to challenge the user for additional information, which is enabled with the eTrust SiteMinder XauthRADIUS add-on solution.

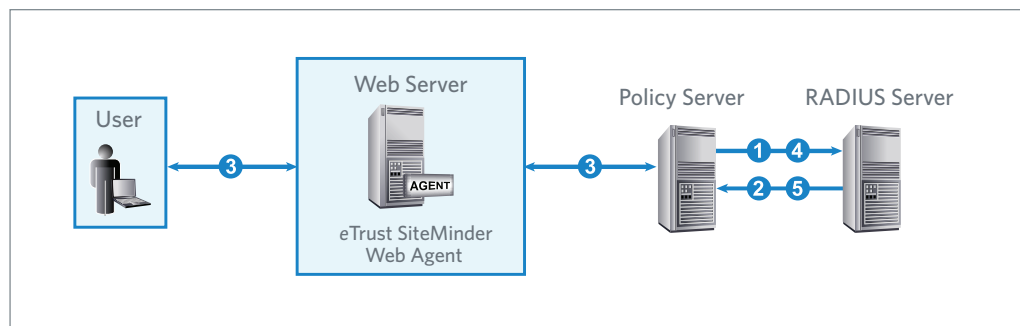


Figure 1. eTrust SiteMinder XauthRADIUS Add-On

How it Works

1. The eTrust SiteMinder Policy Server presents credentials and requests authentication
2. The RADIUS Server challenges the request and demands further information from the user
3. The eTrust SiteMinder Policy Server sends the challenge back to the user and prompts the user for additional information
4. The eTrust SiteMinder Policy Server sends the response back to the RADIUS Server
5. The RADIUS Server authenticates the user

Multiple Server Support (Failover). eTrust SiteMinder RADIUS authentication scheme support limits the Policy Server to one RADIUS Server. There is no provision within the Policy Server for an administrator to 'failover' to a replicated RADIUS Server if the main RADIUS server has gone down. With eTrust SiteMinder XauthRADIUS, the administrator can establish a failover server, as shown in Figure 2.

Technical Overview: Add-On Solutions for Authentication Schemes

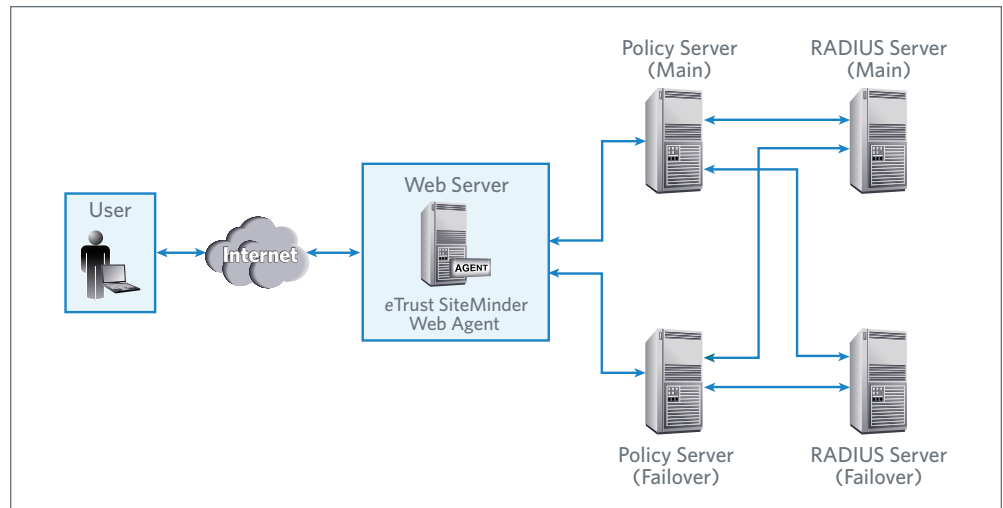


Figure 2. eTrust SiteMinder XauthRADIUS Failover Support

Multiple Server Support (Intelligent Routing). Another application of multiple server support is the ability to route different user communities to different authentication servers. This is accomplished by mapping specific attributes in the user store to specific authentication servers. With eTrust SiteMinder XauthRADIUS, the administrator can have the Policy Server request authentication of employees from one RADIUS server, and partners from a different RADIUS server, as shown in Figure 3.

eTrust SiteMinder XauthRADIUS can support Failover and Intelligent Routing simultaneously, so if RADIUS Server 1 and RADIUS Server 2 in Figure 3 both had failover servers, this could be supported.

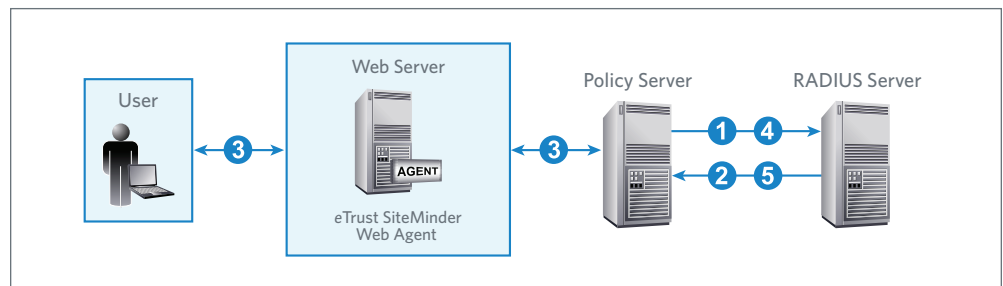


Figure 3. eTrust SiteMinder XauthRADIUS Intelligent Routing

Supported Authentication Servers

Although eTrust SiteMinder XauthRADIUS will likely integrate with any authentication server that supports the RADIUS protocol, it has only been tested and deployed with the following server products: RSA ACE/Server, PassGo Defender, and Secure Computing SafeWord.



For more information, call
1-800-875-9659 or visit ca.com